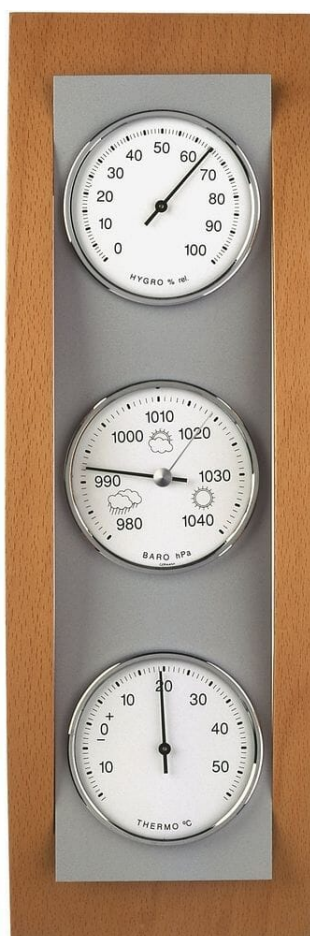




Beech Barometer

Product Images



Short Description

The barometer was invented back in the 17th century for laboratory use, and since then has become a popular household item. This barometer is designed for indoor use, and ideally should be wall mounted.

There are three dials – one for temperature, one for humidity, and one for the all-important barometric pressure.

This barometer is shipped from us in safe transportation mode, and will arrive to you unset. This is so that the needle does not move in transit, and therefore become damaged. On arrival, the barometer needs to be manually set to your local air pressure, which you can find online from various resources. This process is very simple, and can be done by simply turning a screw on the back to make the needle move to the required position. Once the barometer is set, it is ready for use.

Increasing pressure indicates that the weather will be getting better with more warmer and dryer conditions.

Decreasing pressure indicates that the weather is set to worsen - with cloudy days and rainfall. Quick drops in pressure can signify that a storm is imminent in the next several hours.

Description

Colour: Beech/Aluminium

Dimensions: 127 x 64 x 390mm

Diameter Of Dials: 81mm / 81mm / 81mm

Weight: 700 Grams

Additional Information

Brand	TFA Dostmann
Barometer Style	Modern
Barometers Designed for	Indoor
Material	Wood